

Assembly Instructions for Pinnacle Prone/Exam Table

Tools you will need:

- 7/16" Socket Wrench (recommended) or Box Wrench,
- Phillips heads screwdriver
- Hammer

Each piece has been numbered or lettered for your convenience

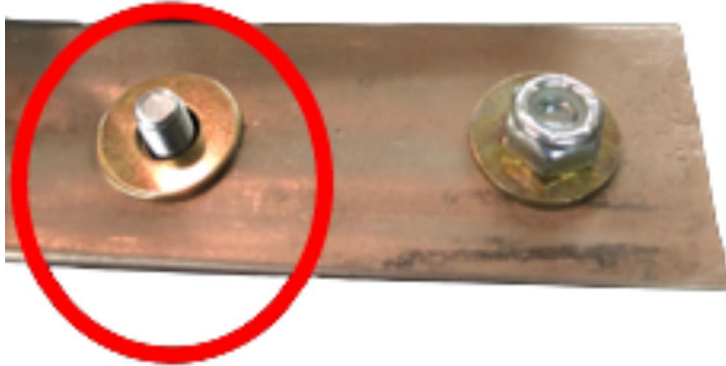
Located in the box with the stainless steel legs, is a bag of screws, vinyl locking nuts, and washers to assemble your table.

- 1) **Turn the table upside down** and place it on something soft as to not damage the vinyl.
- 2) **Sticker-face goes to sticker-face on all stainless steel pieces.** No need to remove the stickers, they will be hidden during your installation.
- 3) **Install each leg with its corresponding number or letter on the table.** Install each leg with a 1/4" vinyl locking nut only (no washer).

You may need to "persuade" the legs into position with a **light TAP** of the hammer. **DO NOT** over tighten nuts.



- 4) **Install the two arms** with ¼” washer and vinyl locking nut.



- 5) **Install the face paper holder.** Screw holes have been pre-drilled for your convenience on the side of the table.

Congratulations!
Your table is complete and ready for use!

Questions?

Call Bill at 847-652-8472 or visit the *Resources* area of our website at www.prairiefabrications.com.